

*Metamorphosis I, 1937*

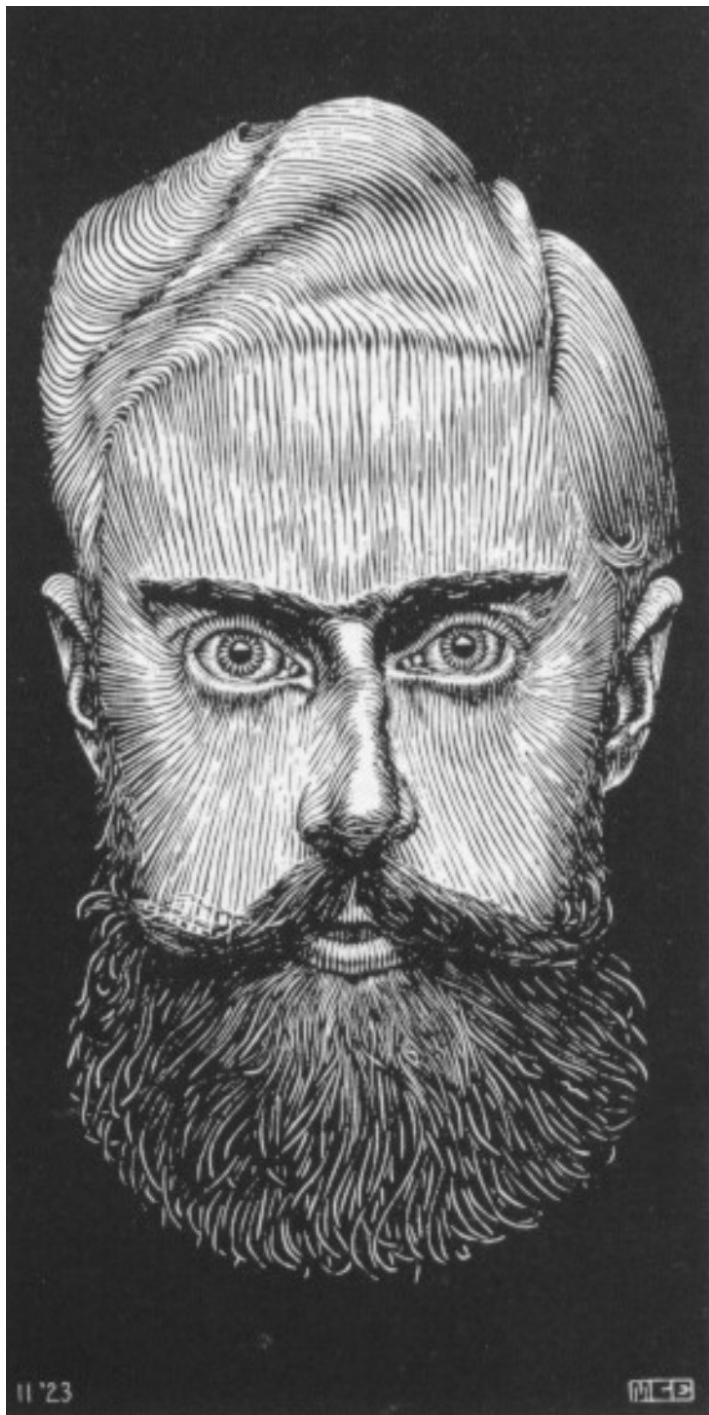


*Metamorphosis II, 1940*



*Metamorphosis III, 1968*





*Self-portrait (1923)*



*Woman with Flower (1925)*



*Alhambra 1910*











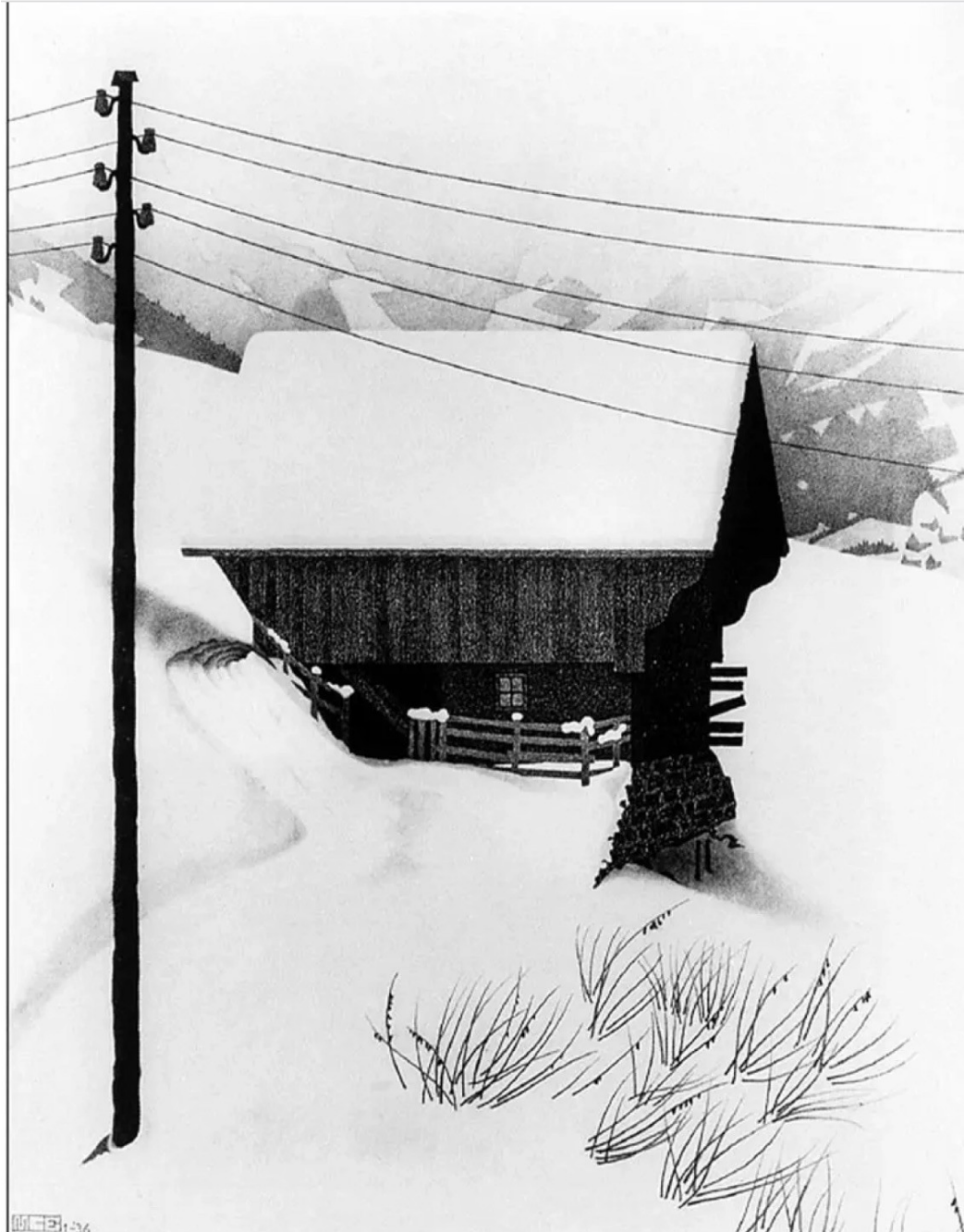












*Snow in Switzerland (1936)*





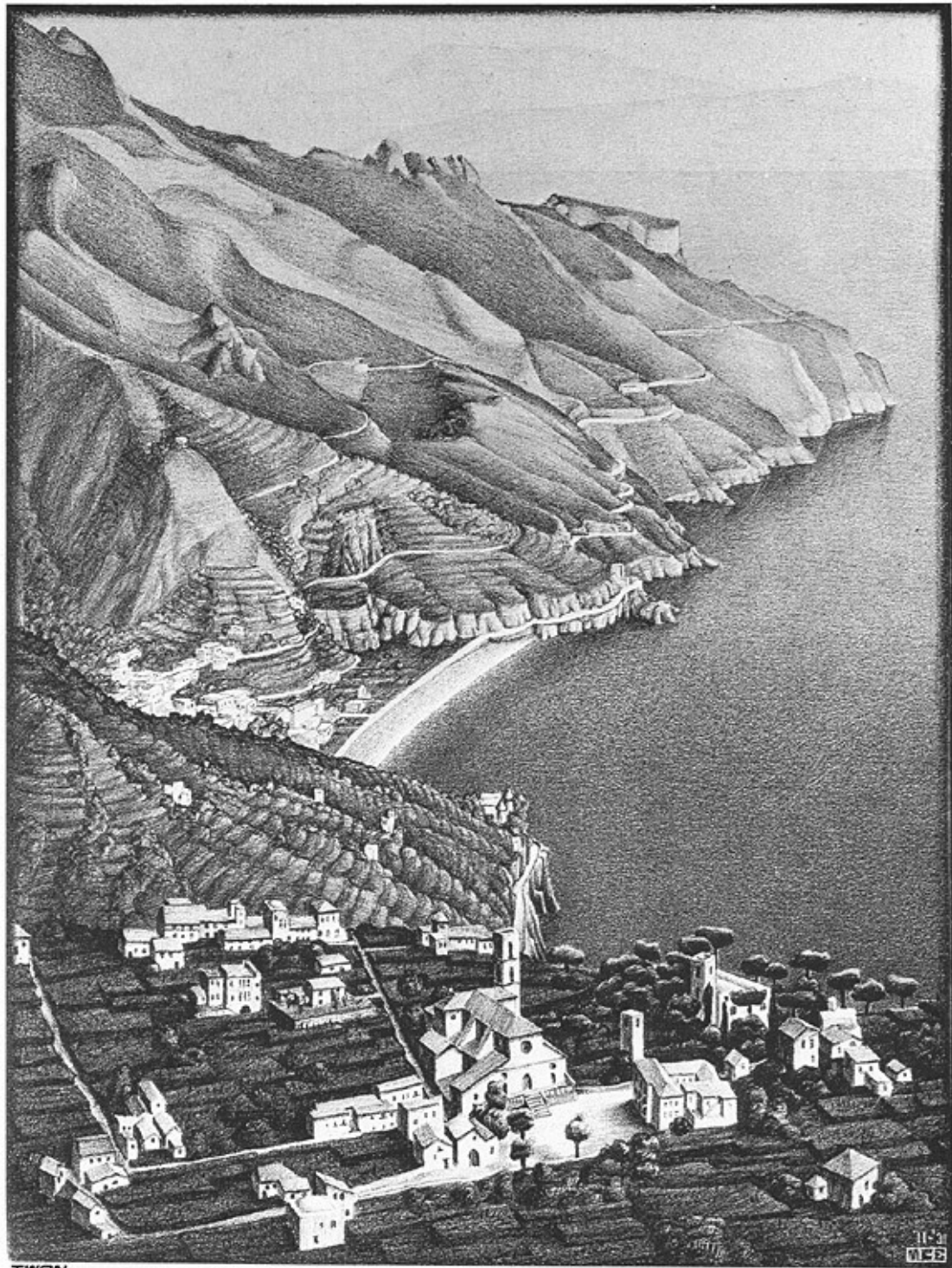




































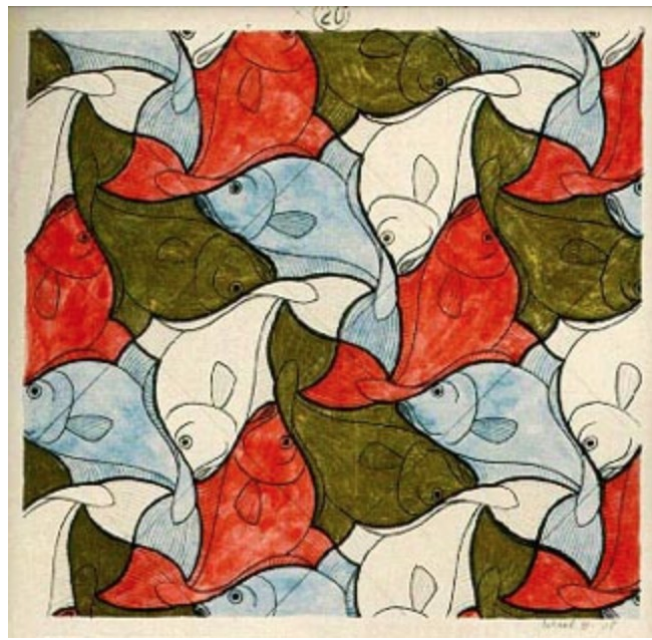




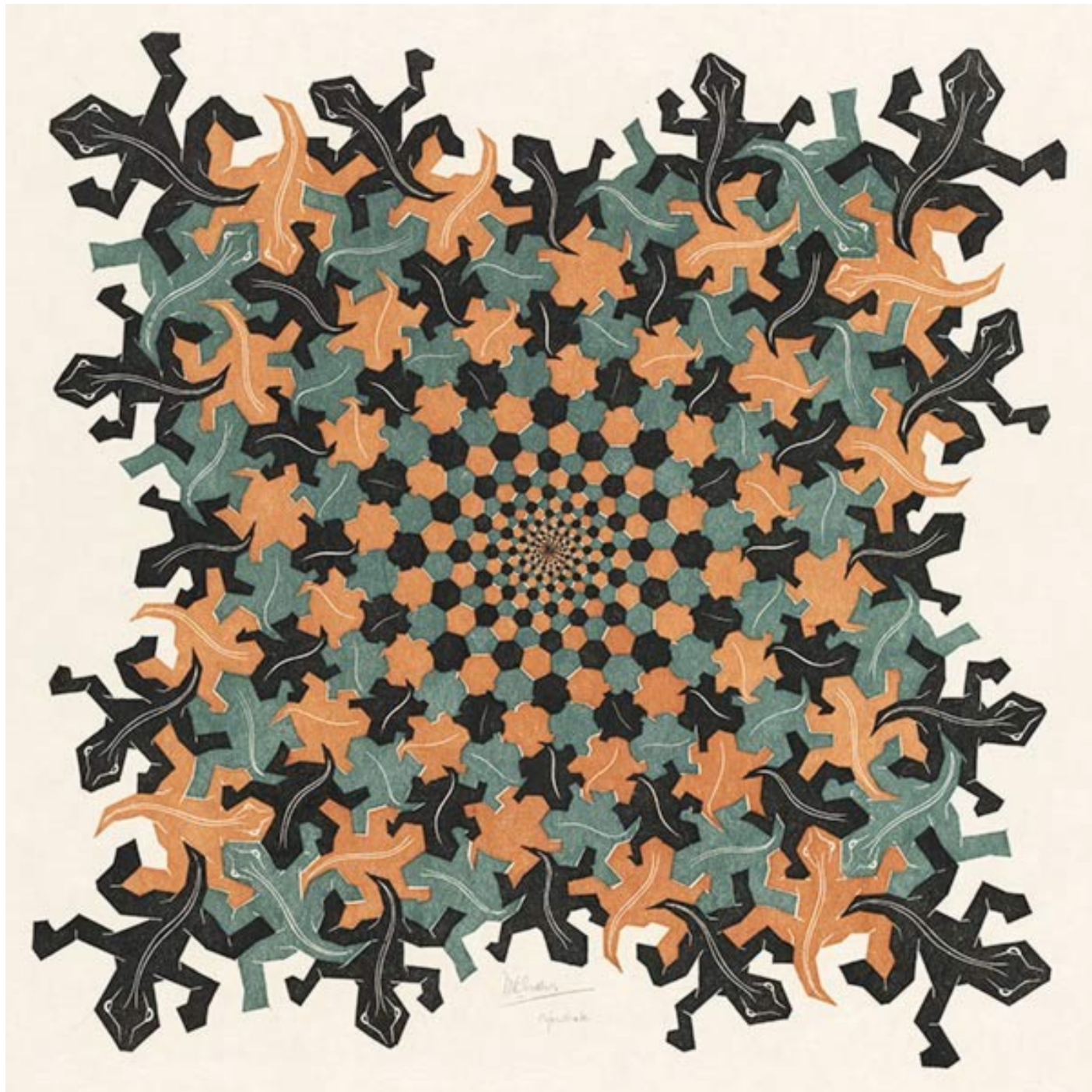




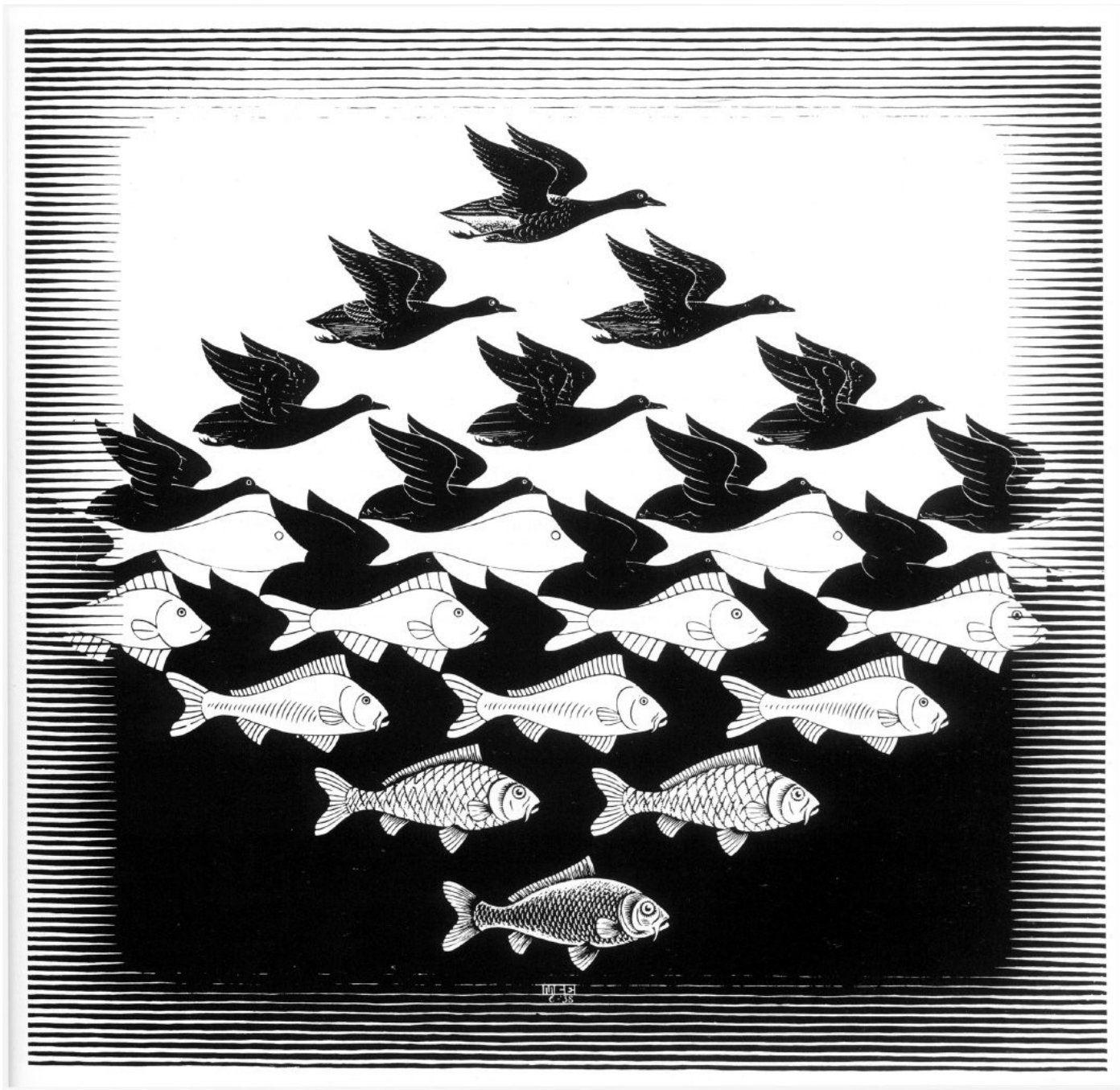


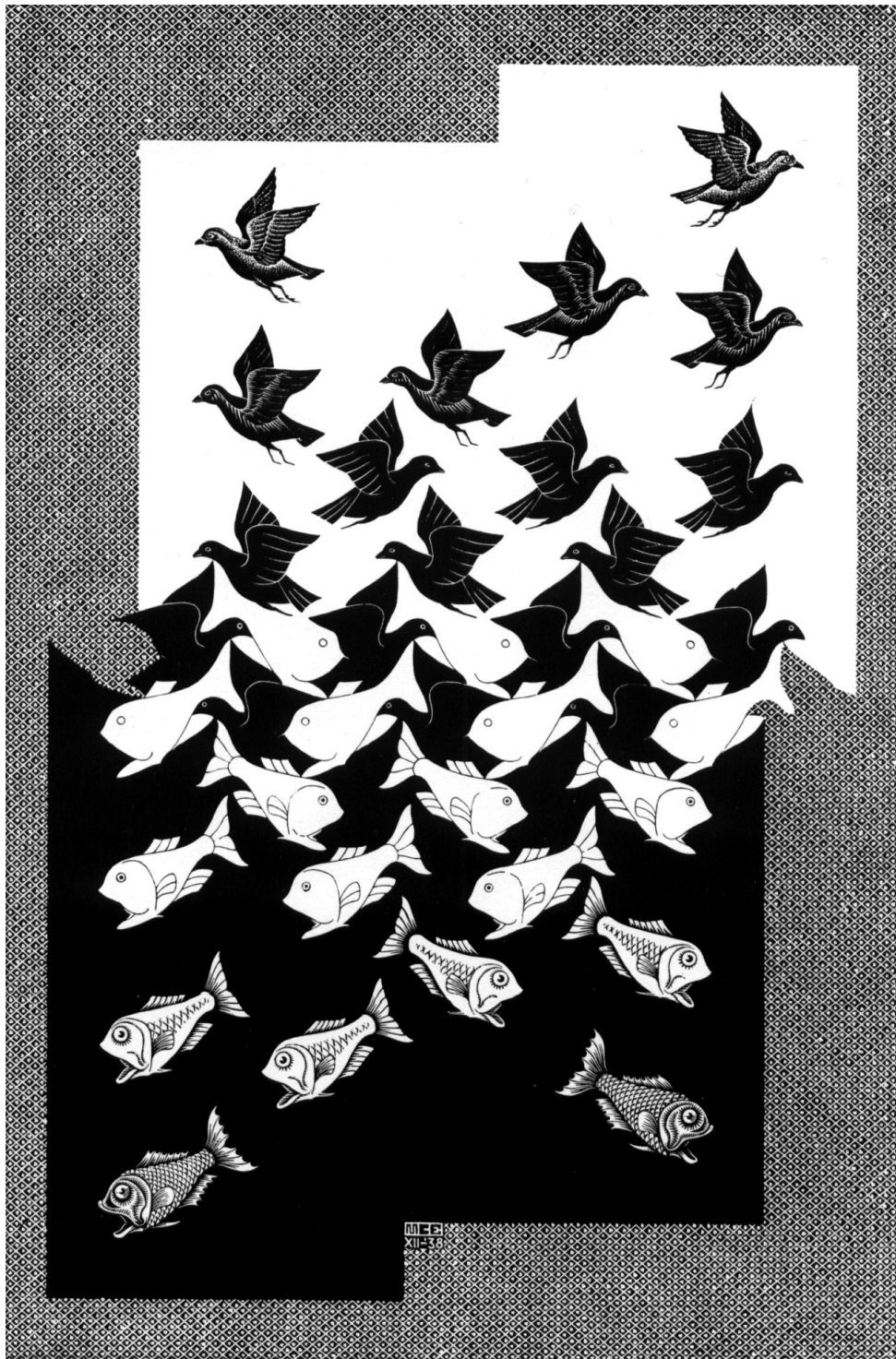




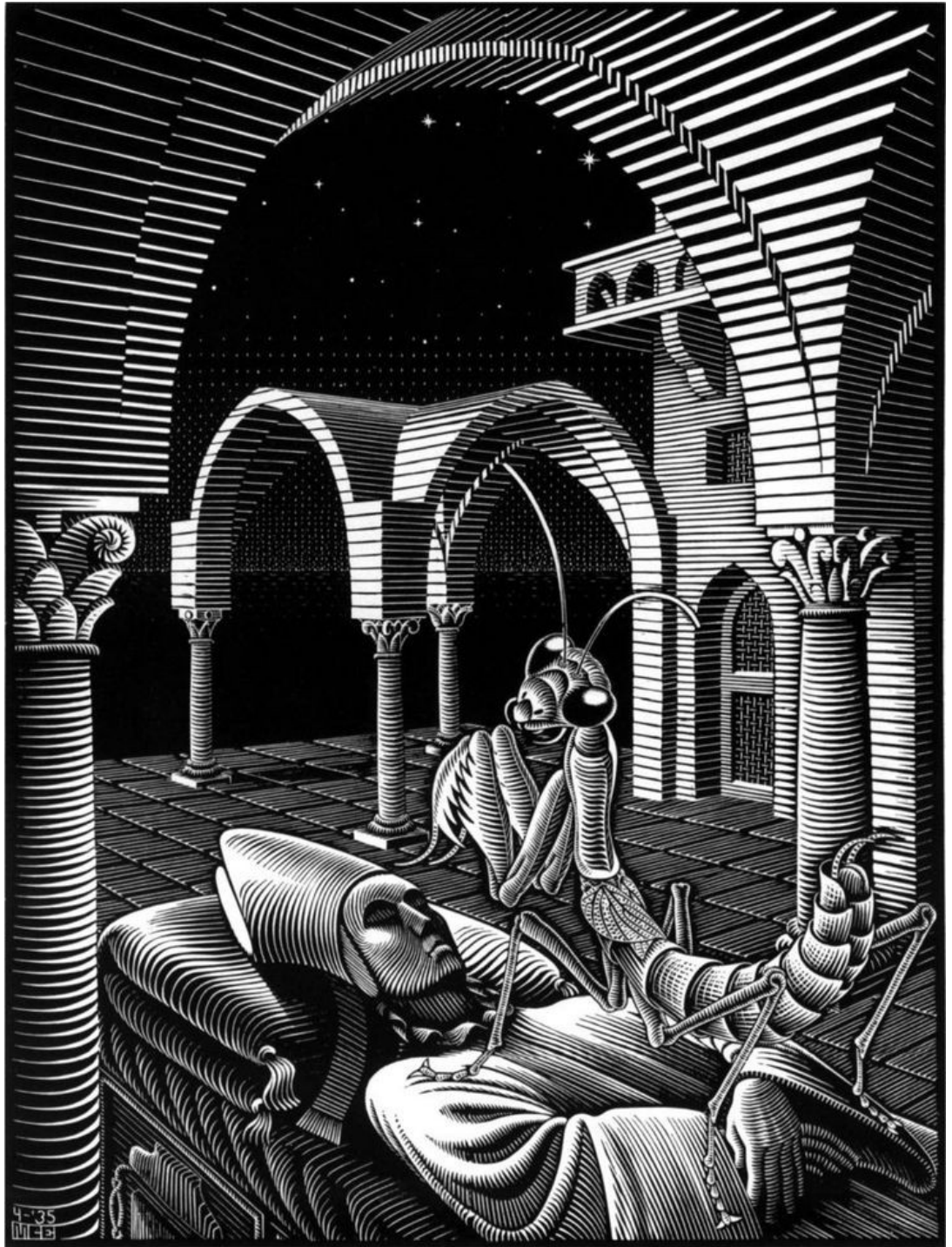
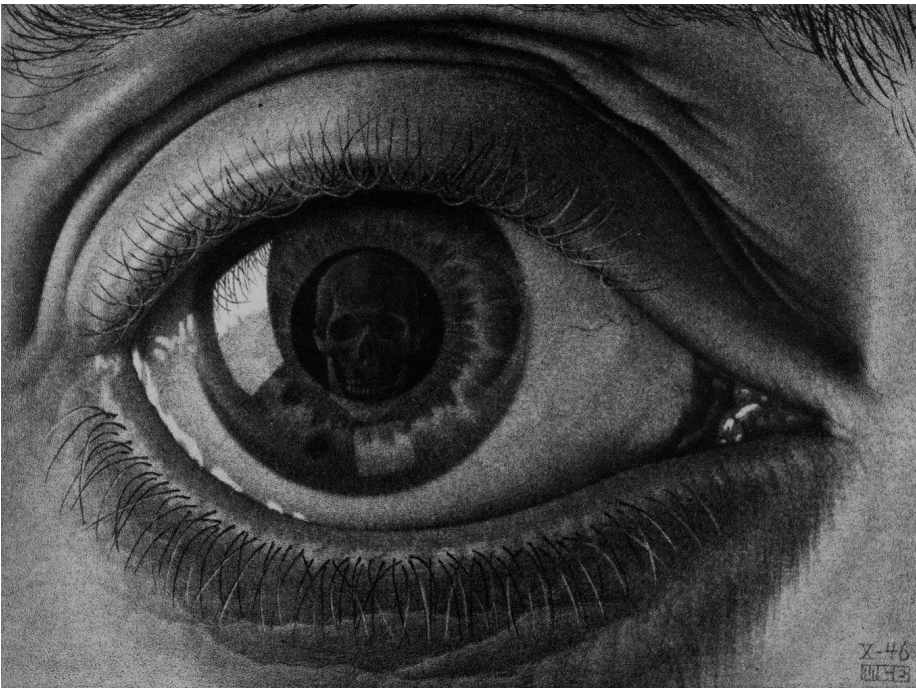


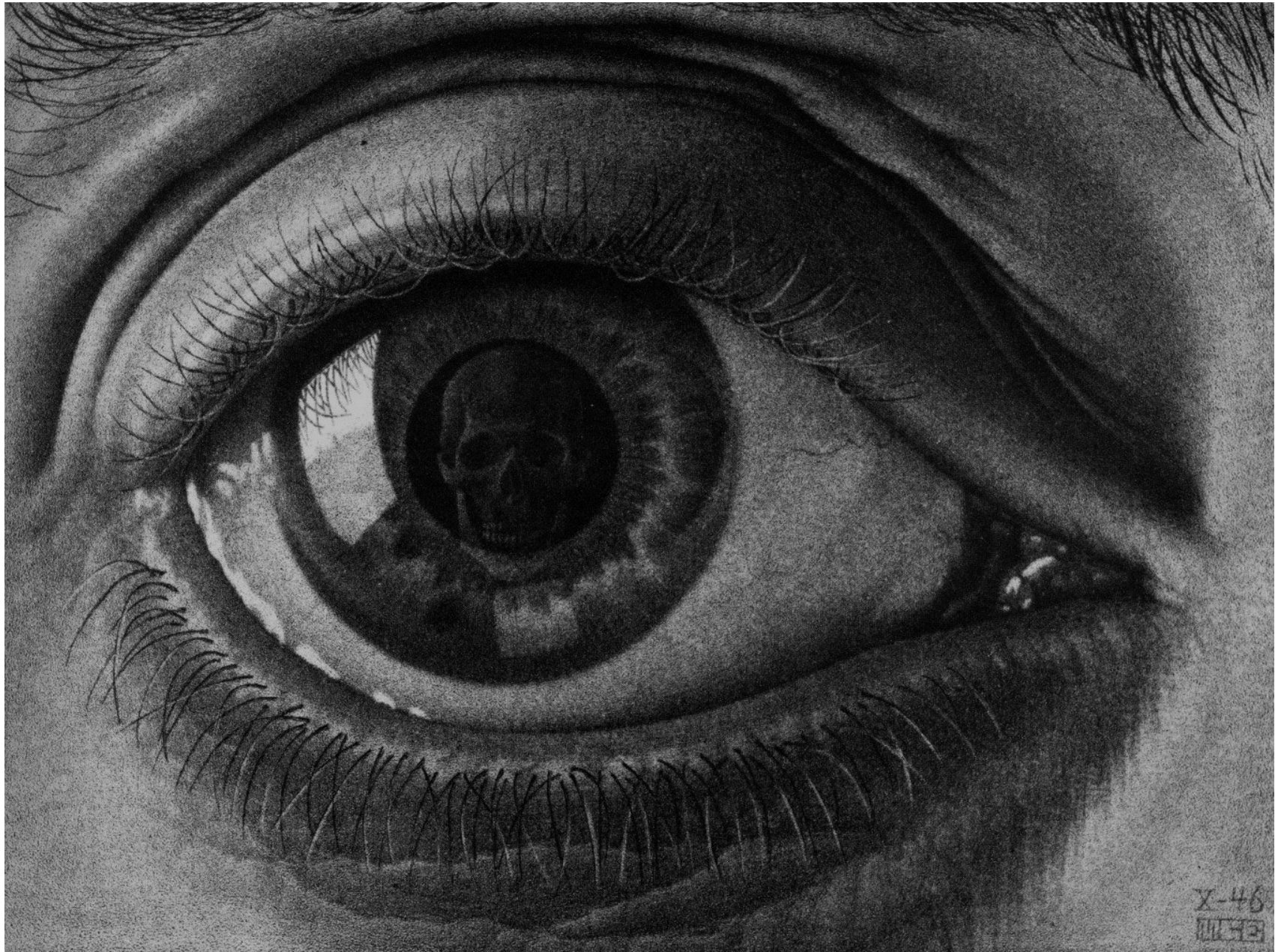




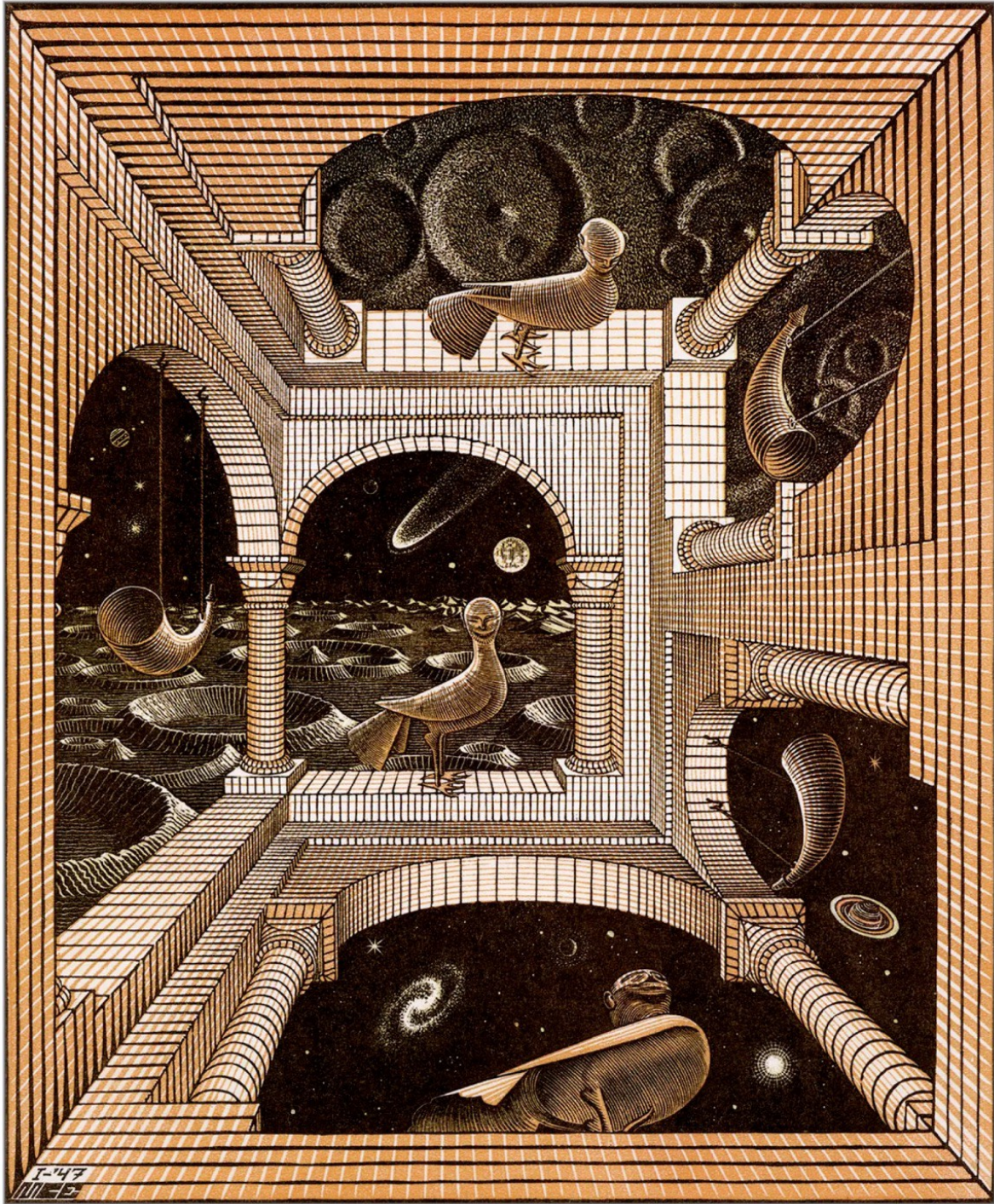












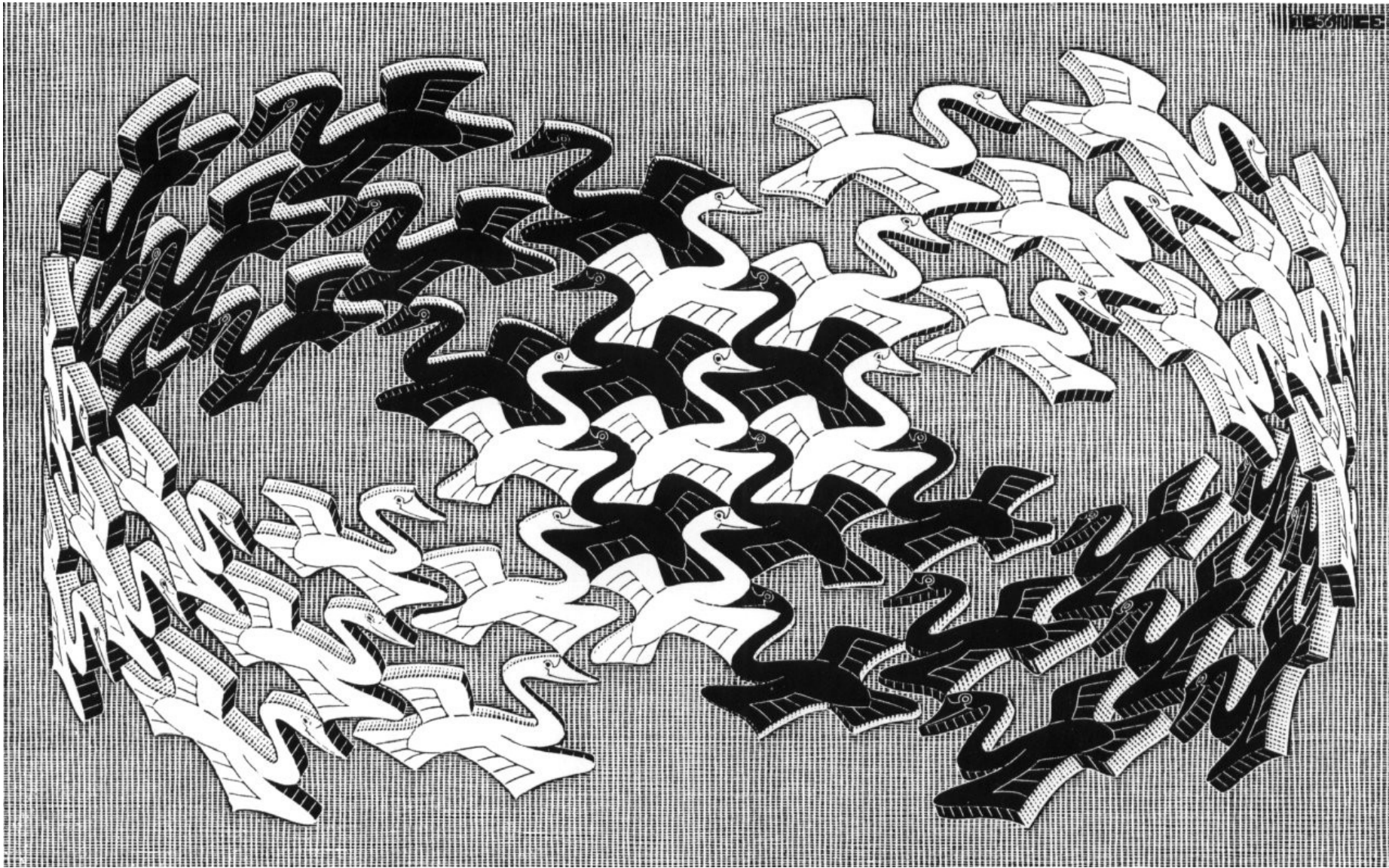








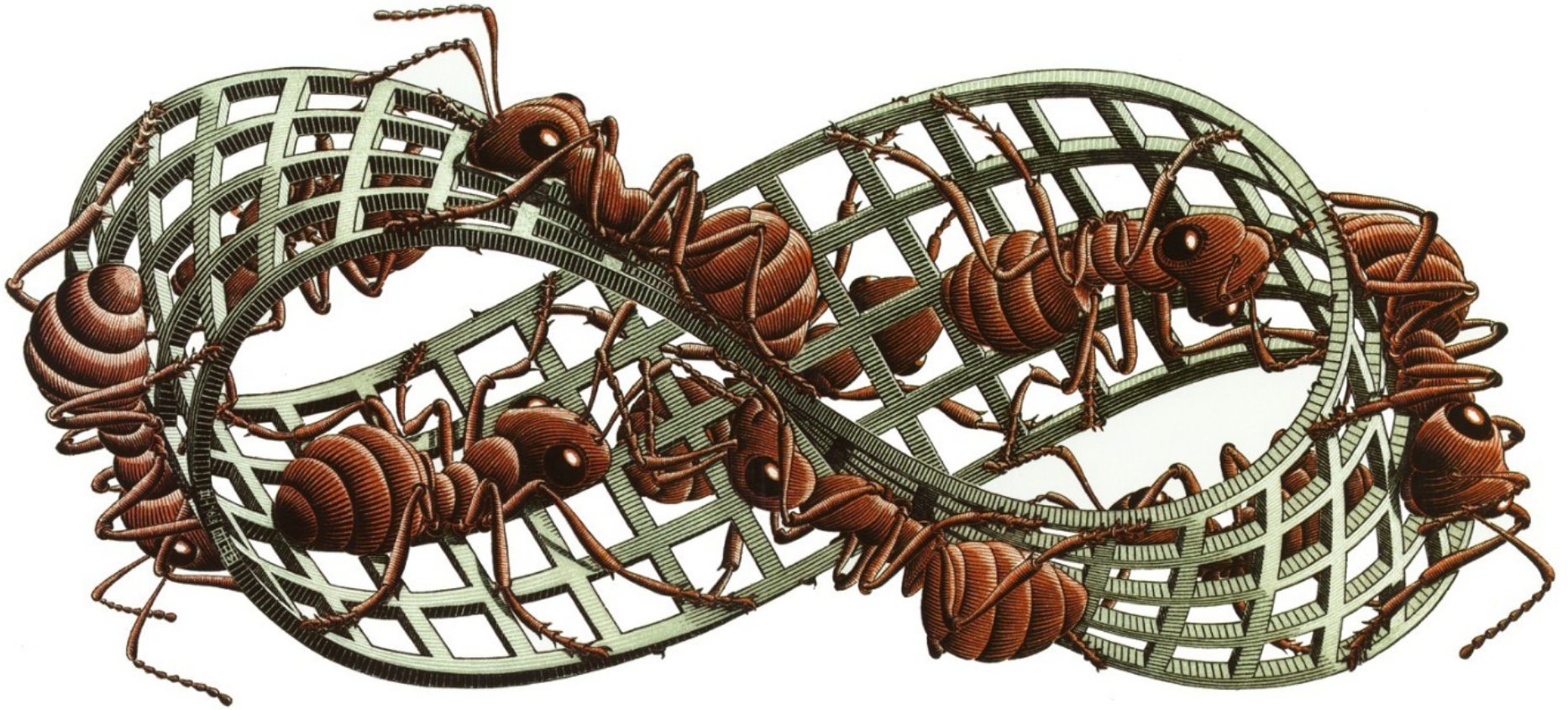




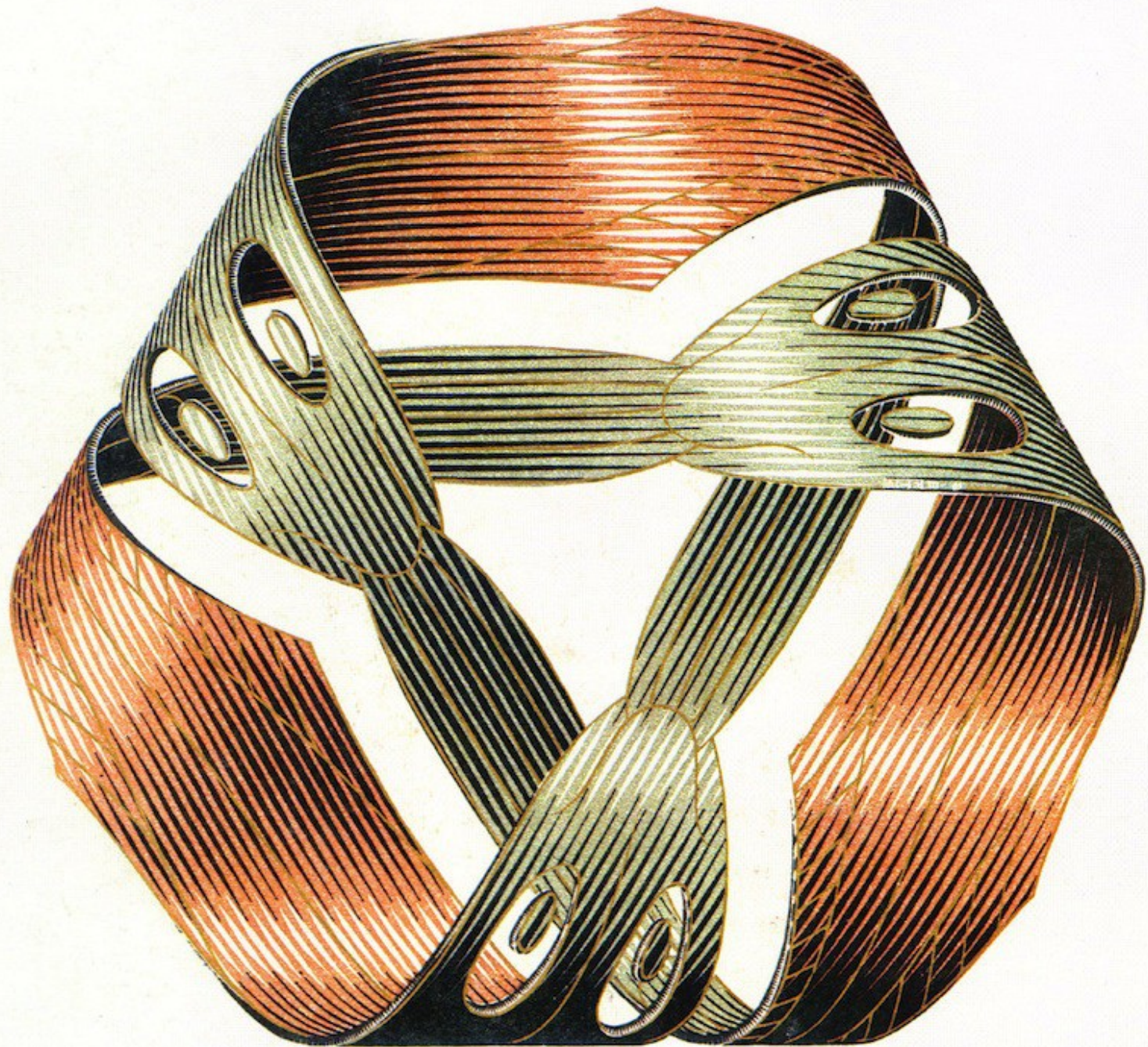


# Möbius Strip

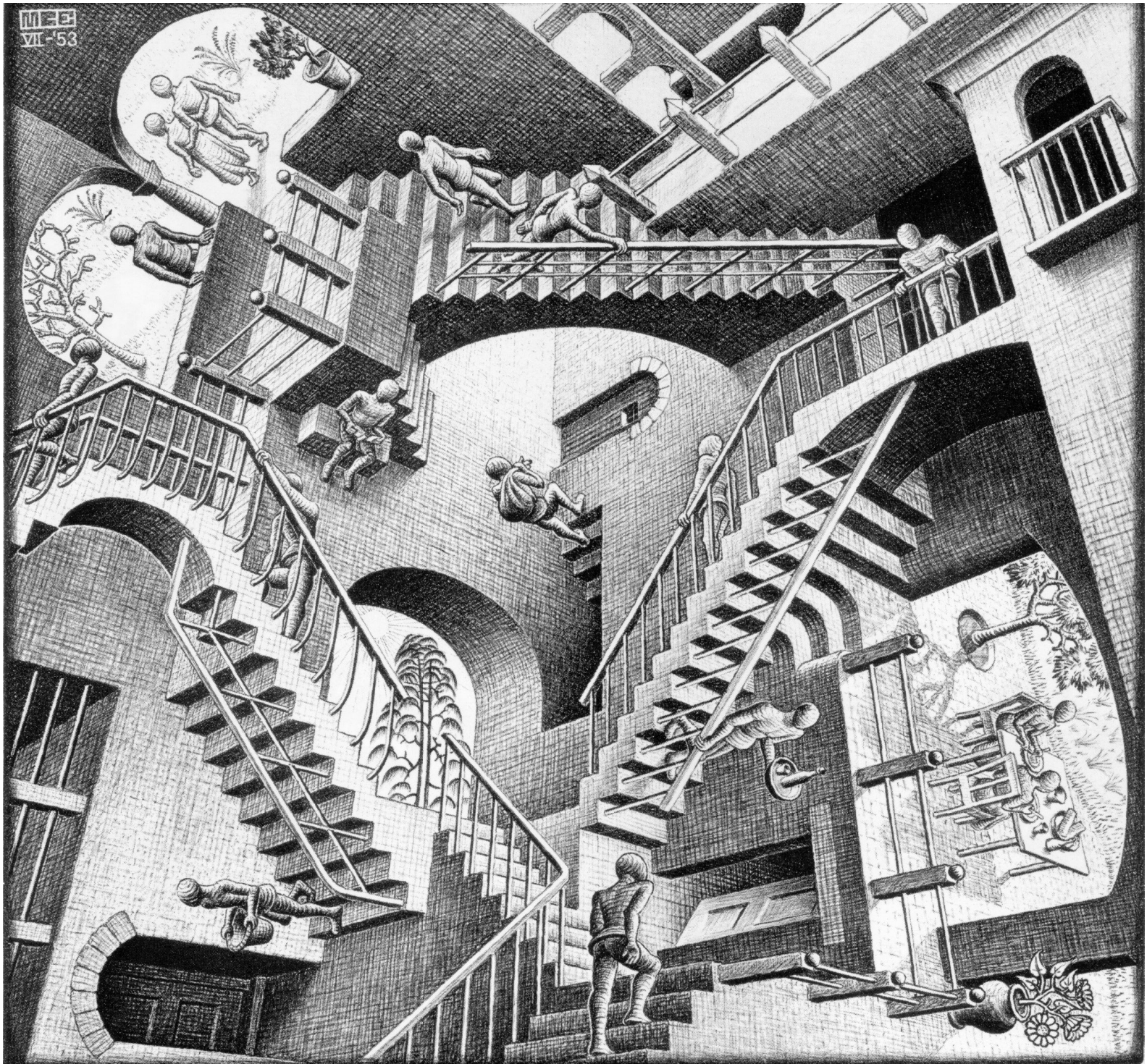




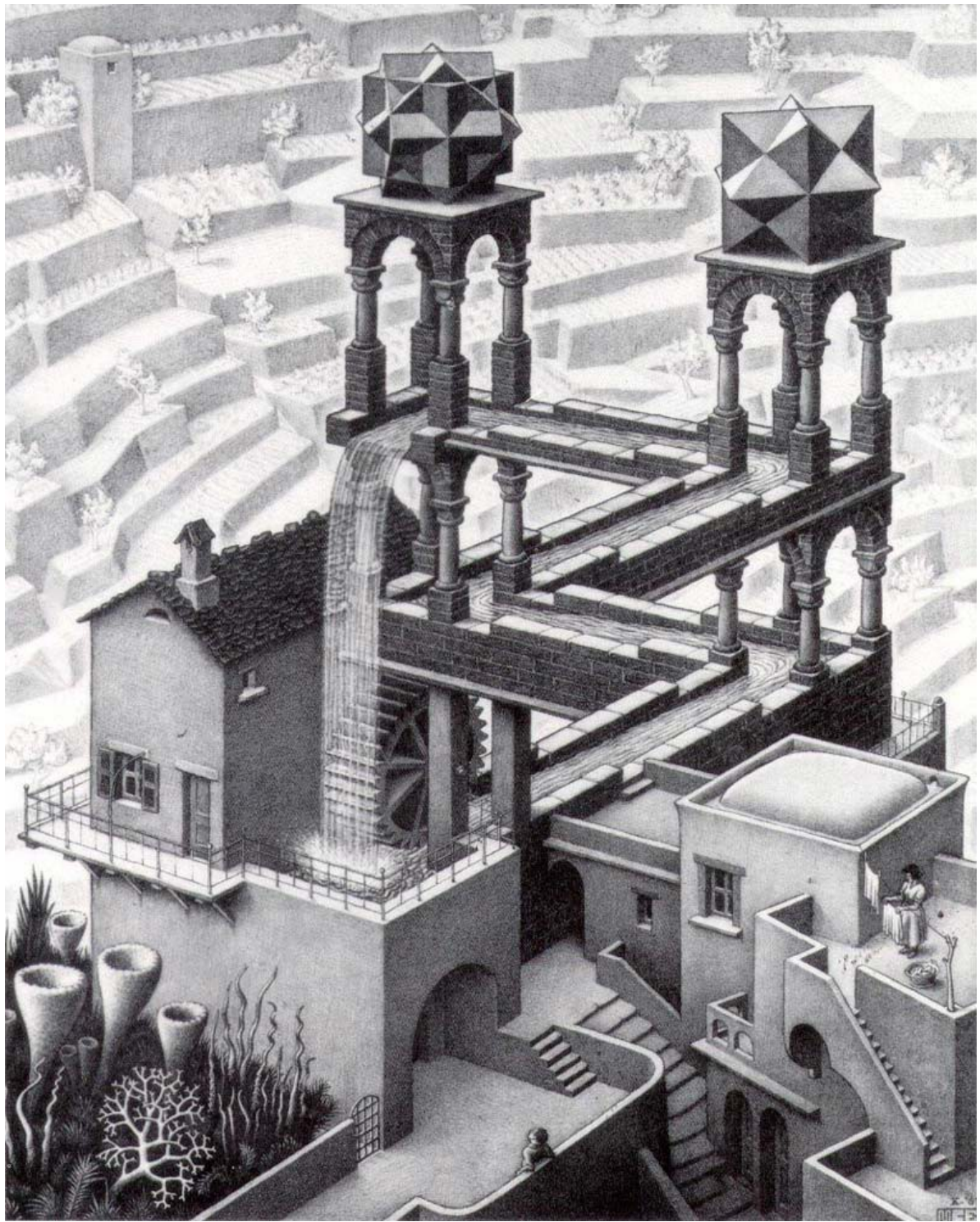


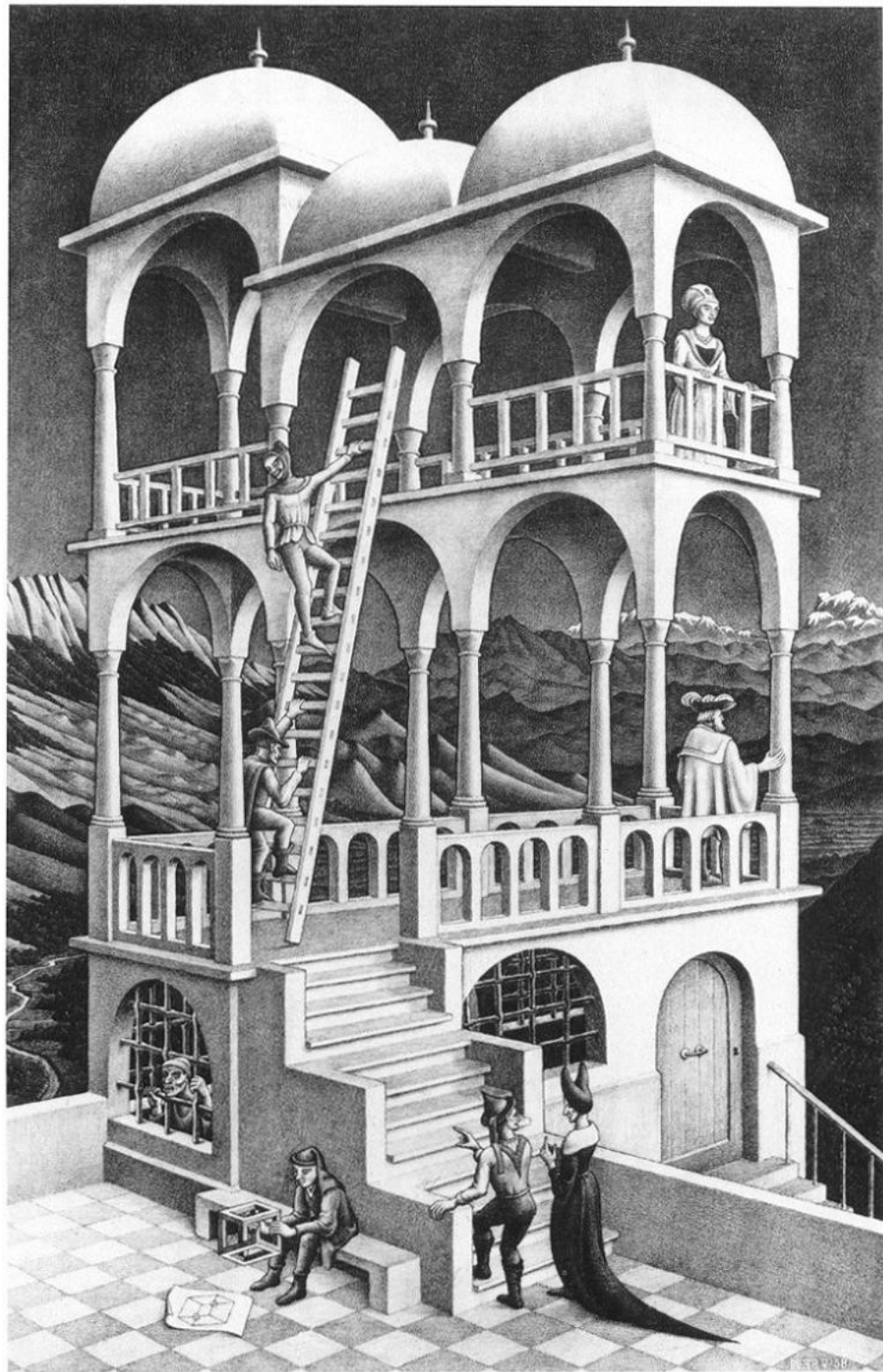




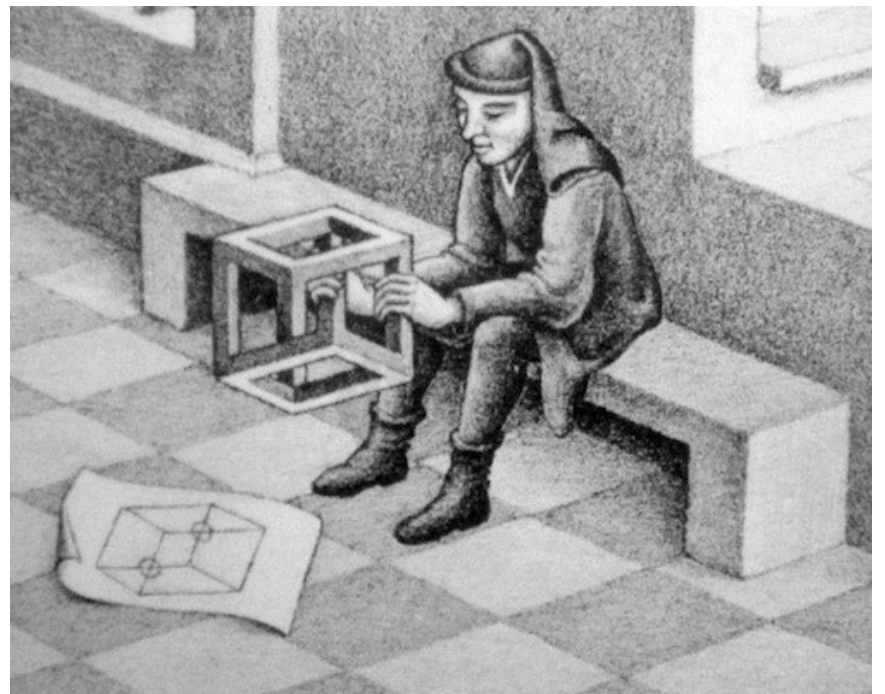
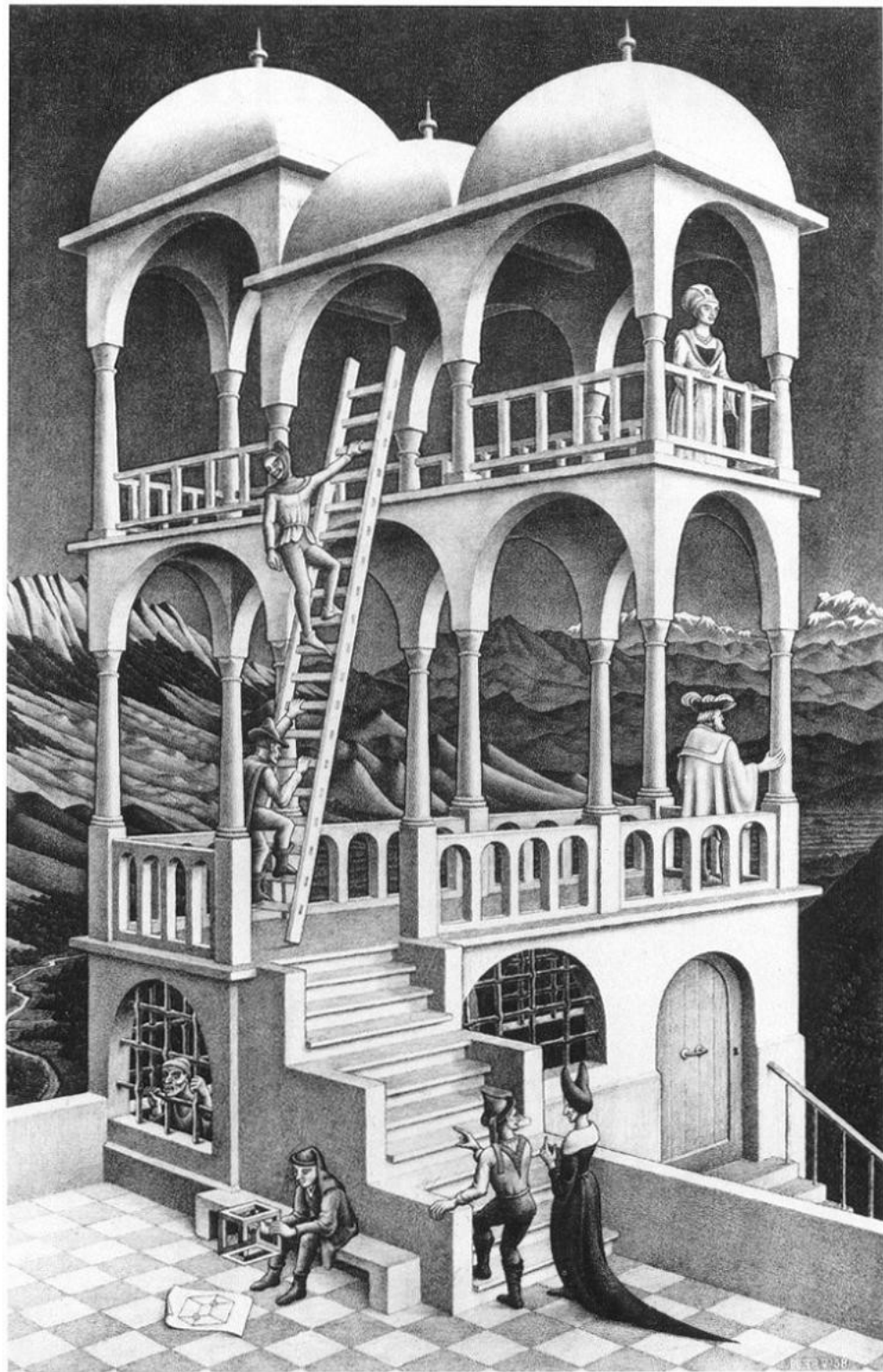


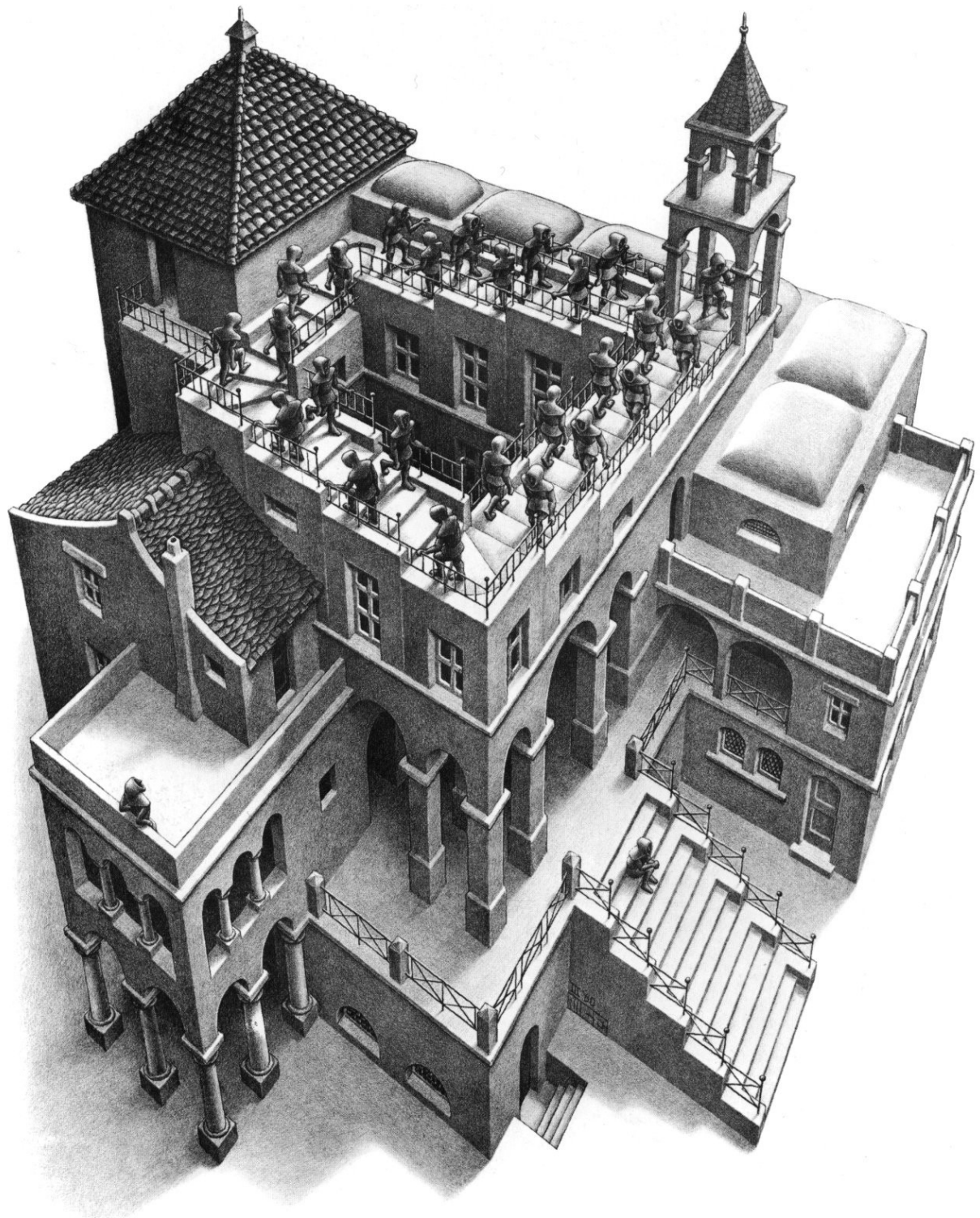




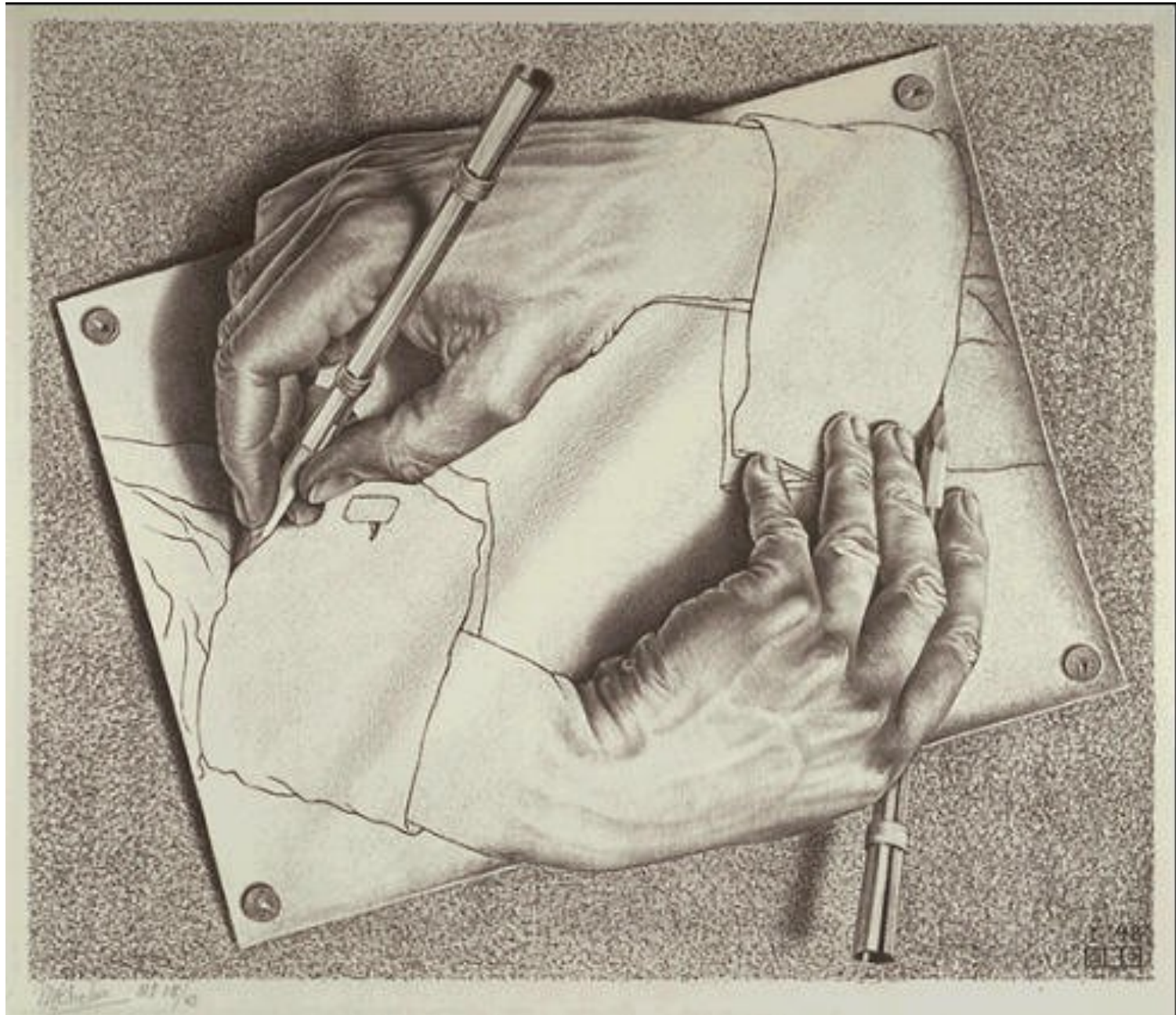






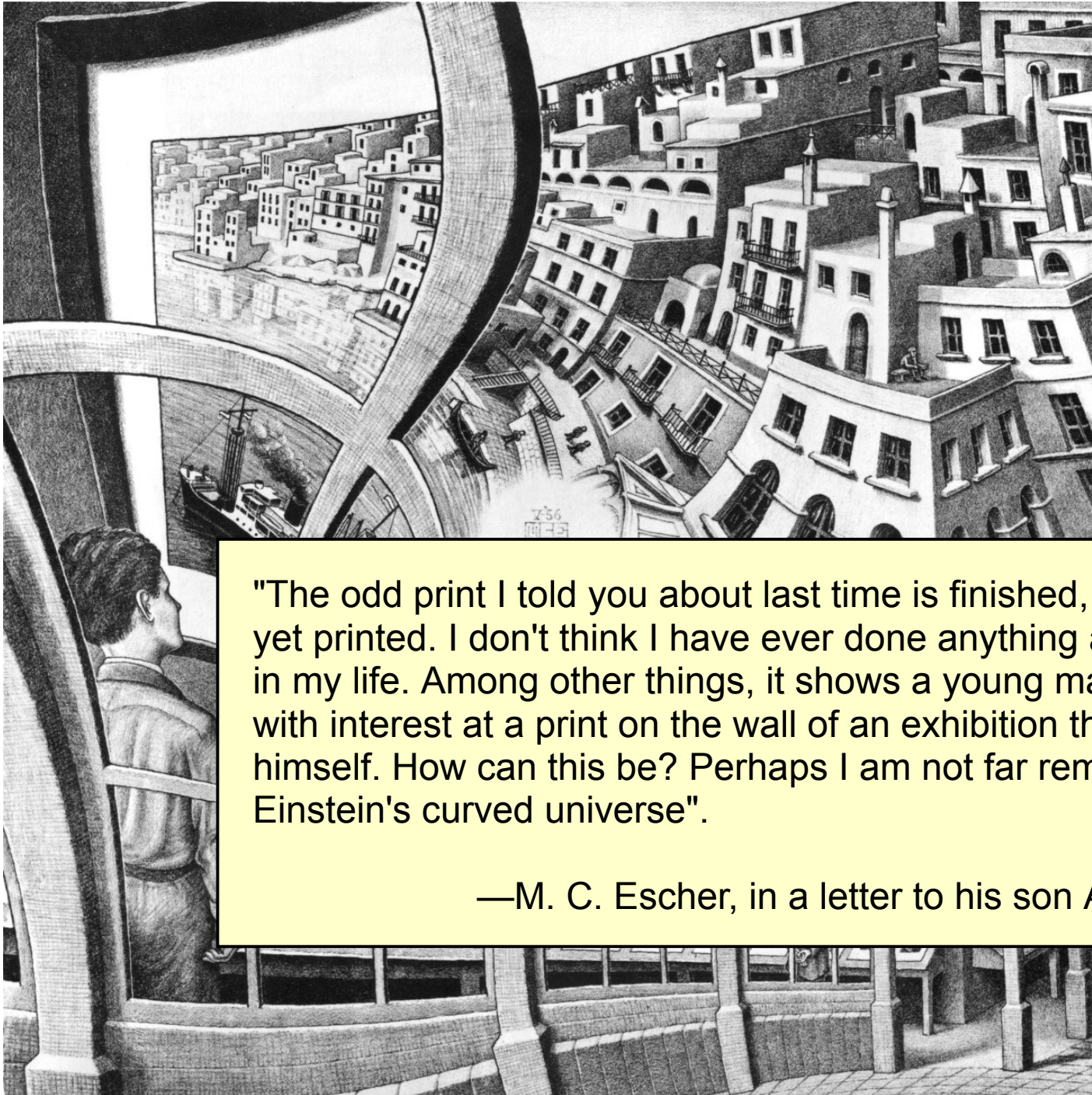






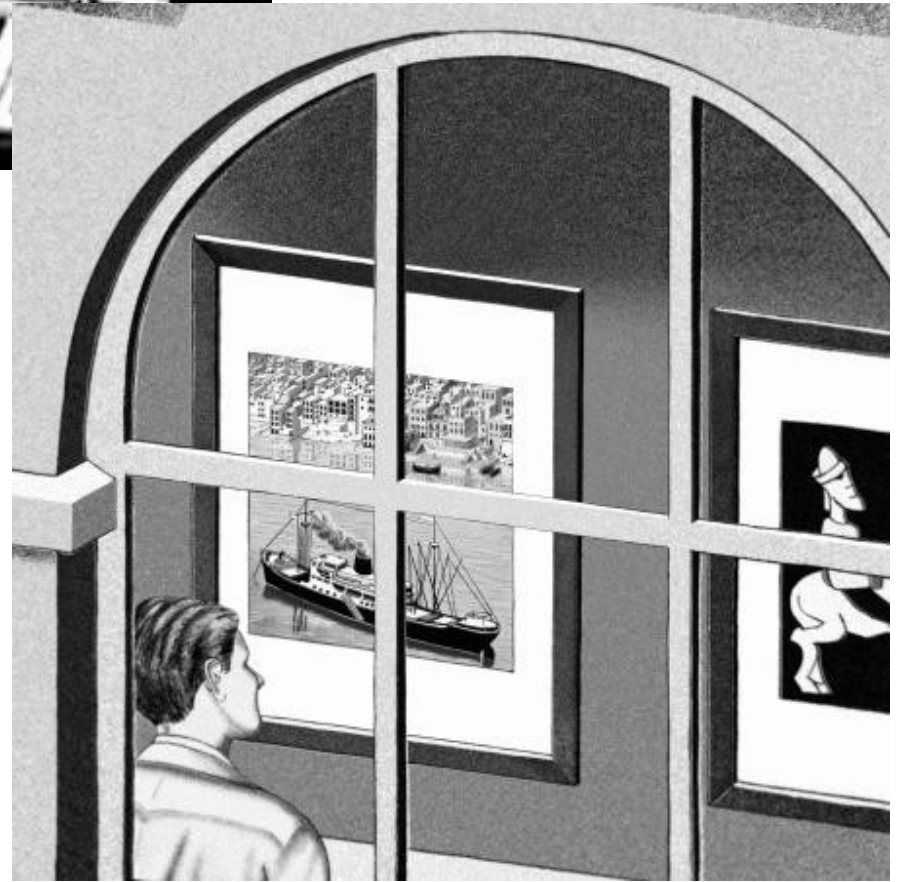




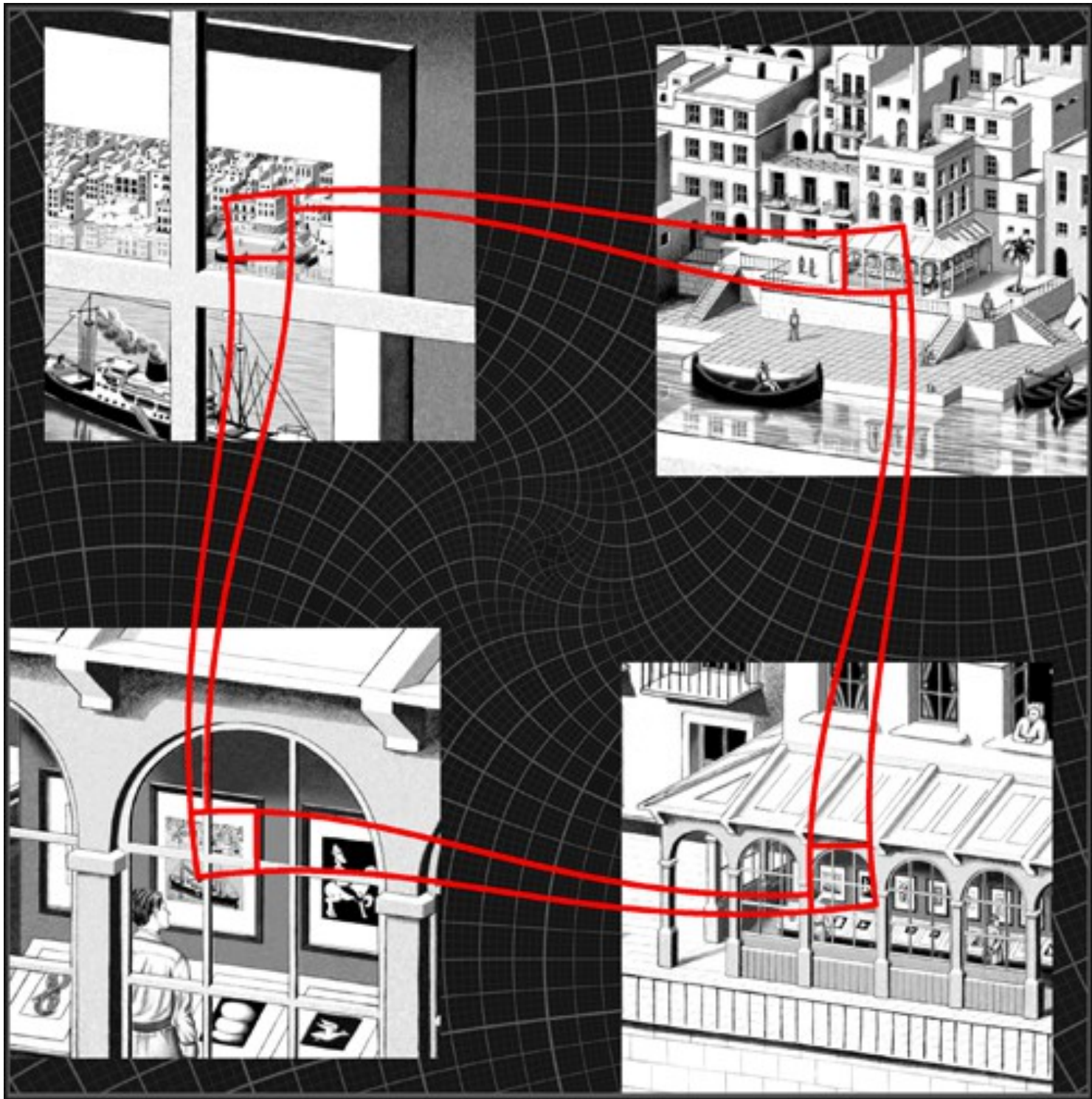


"The odd print I told you about last time is finished, though not yet printed. I don't think I have ever done anything as peculiar in my life. Among other things, it shows a young man looking with interest at a print on the wall of an exhibition that features himself. How can this be? Perhaps I am not far removed from Einstein's curved universe".

—M. C. Escher, in a letter to his son Arthur, 1956

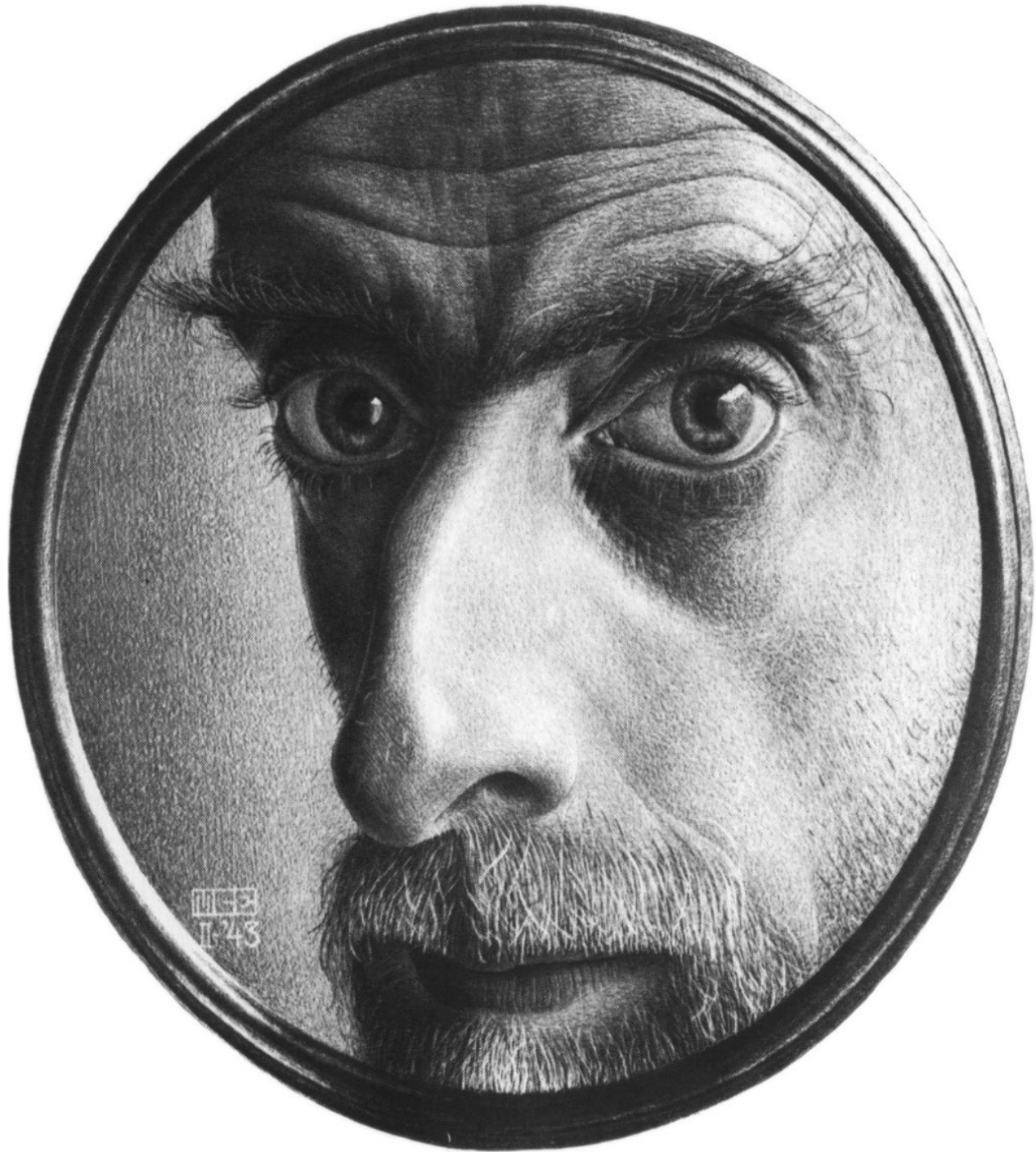


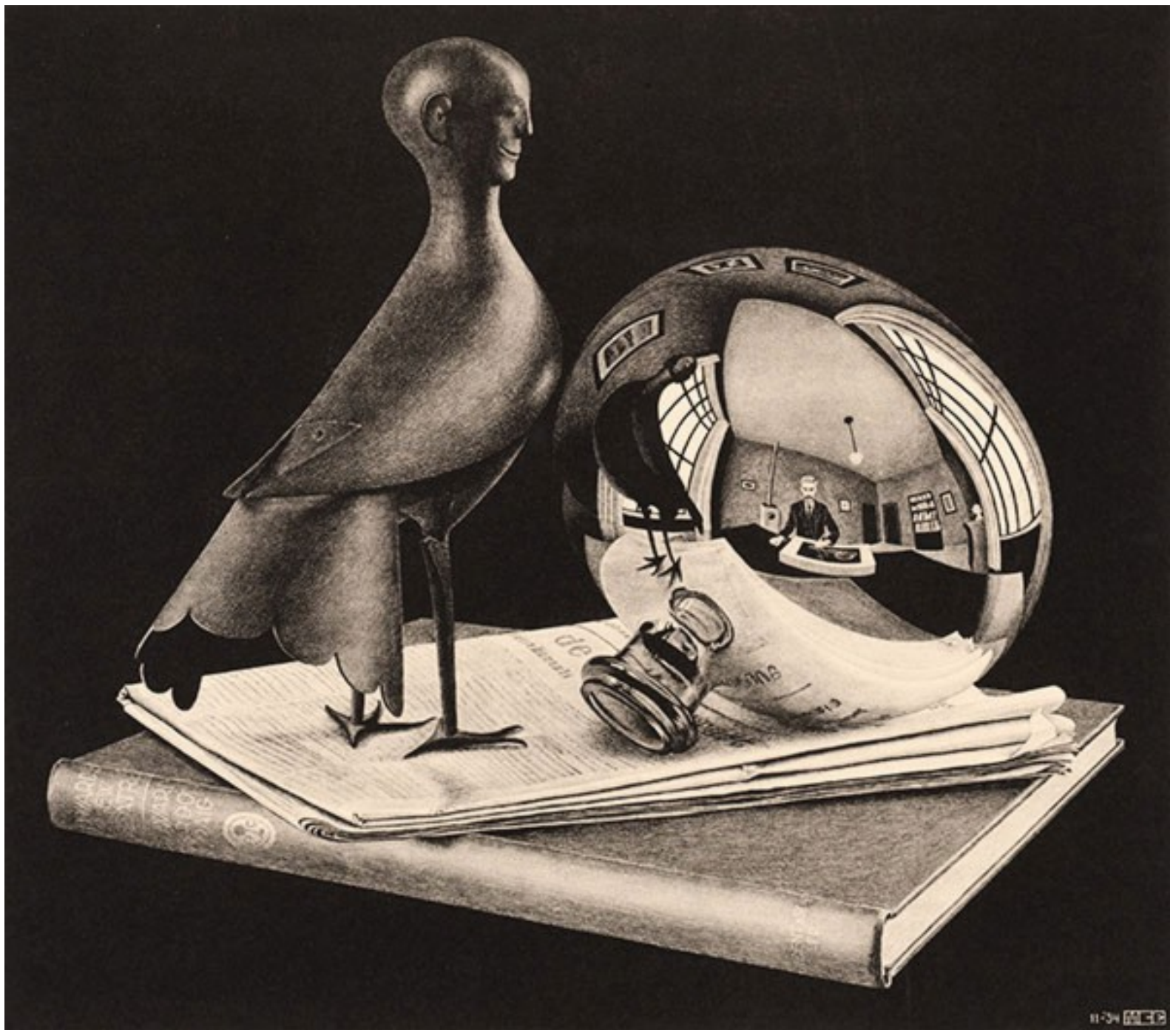




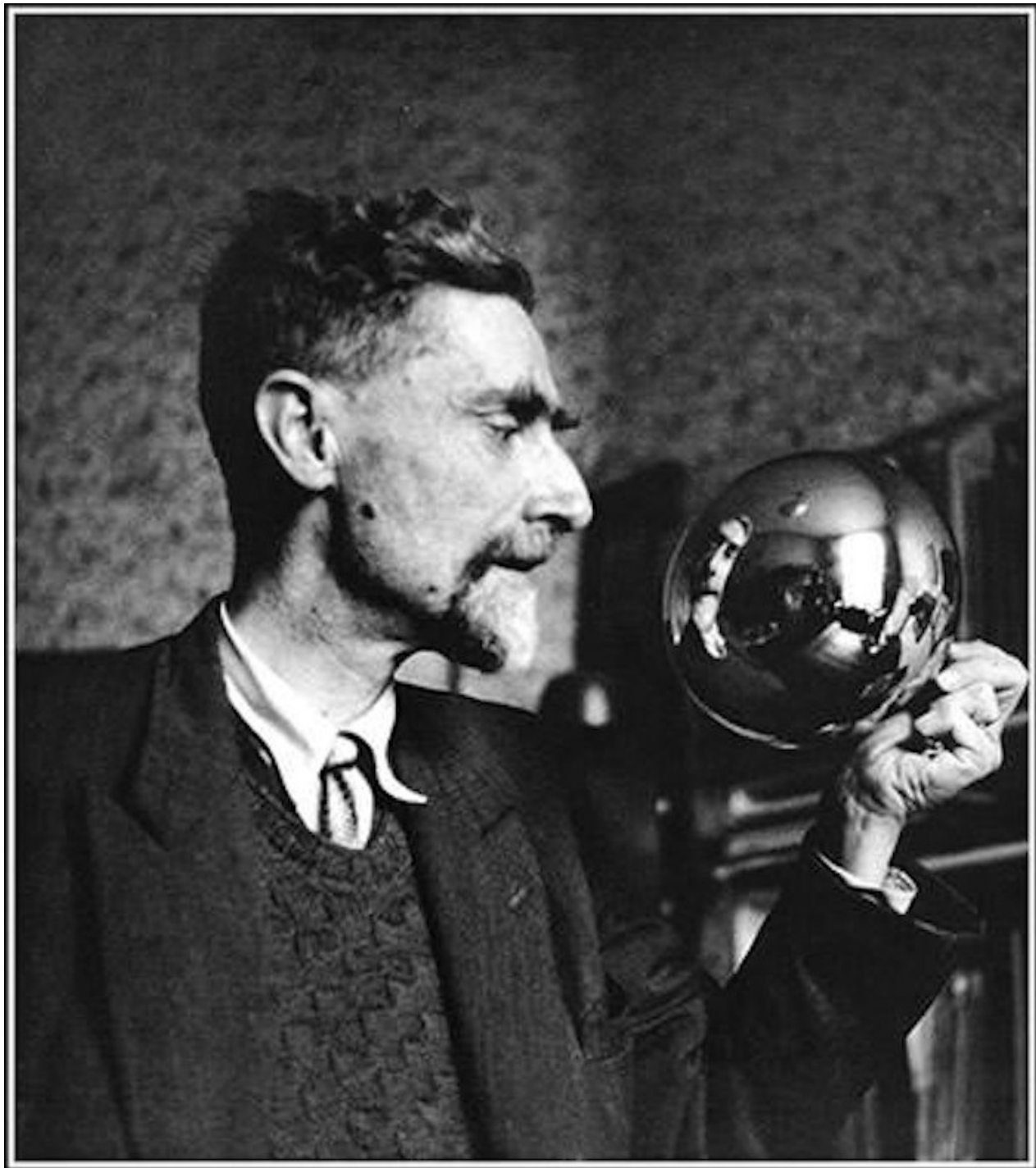


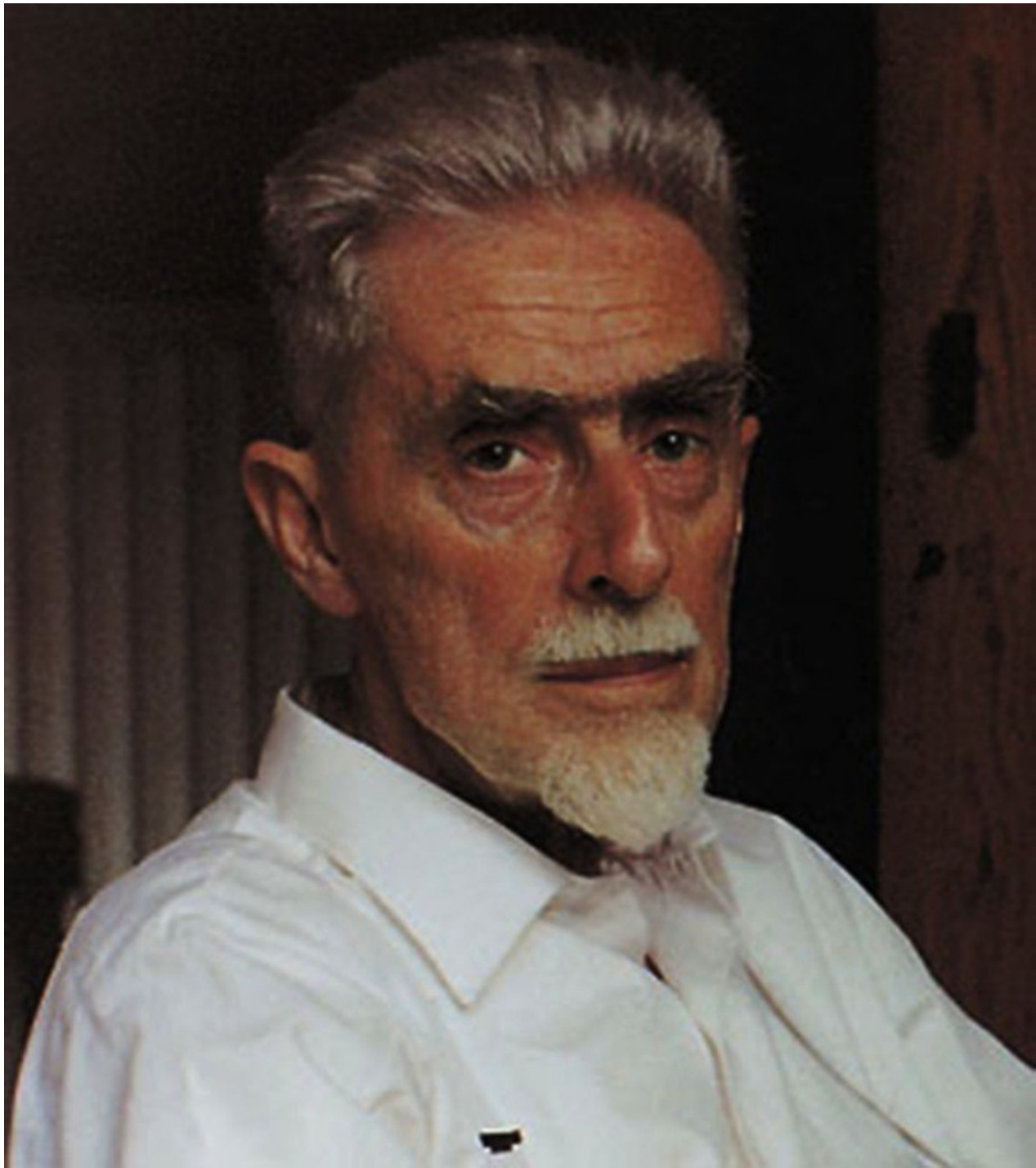










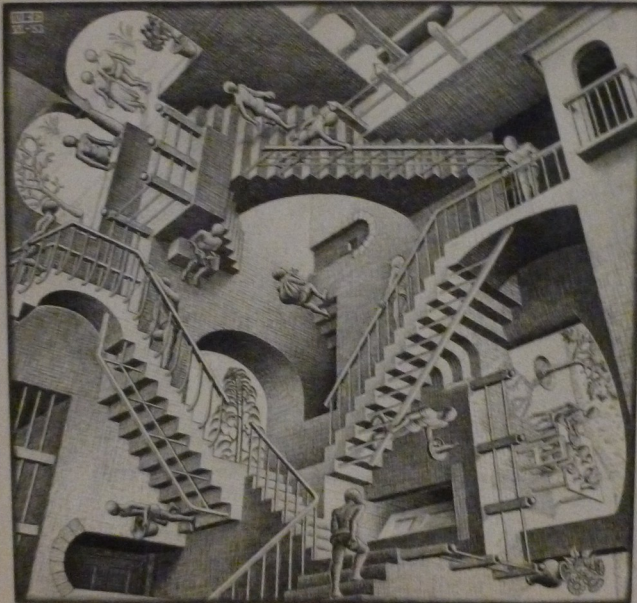




# M. C. Escher's Car















Winkel, Winkel, 27-38

9

System IIIA





1957







